



亞洲大學|資電學院

Asia University| College of Information and Electrical Engineering

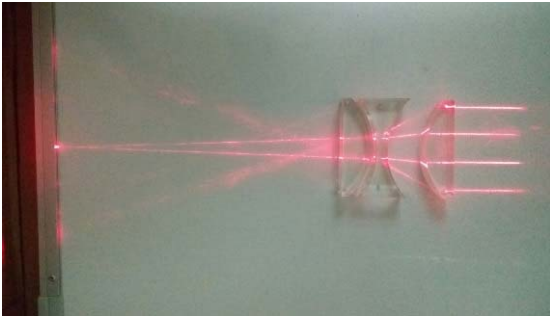
光電與通訊學系

Department of Photonics and Communication Engineering

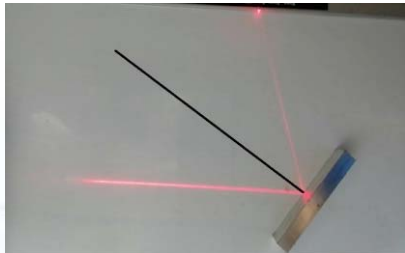


普通物理實驗 —幾何光學、波動光學

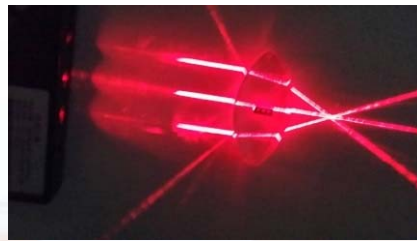
➤ 幾何光學



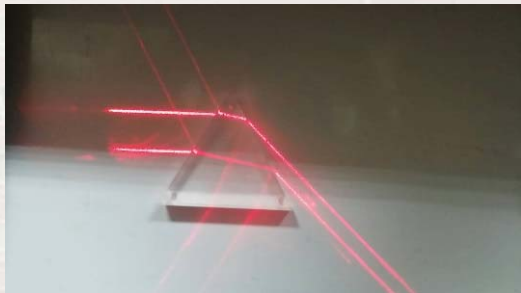
複合透鏡組合



反射定律

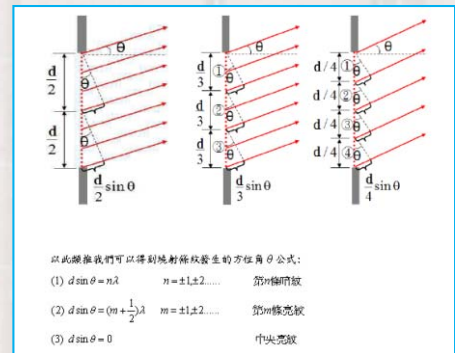
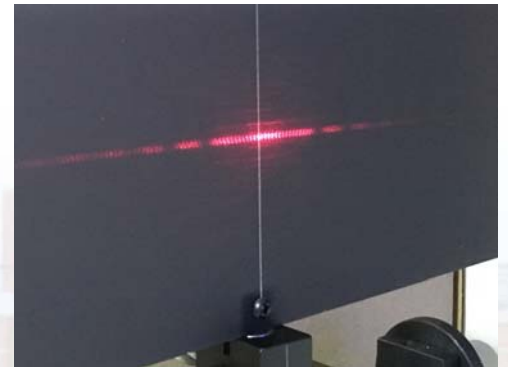


凸透鏡的焦距測定



平行光進入三稜鏡的折射

➤ 波動光學

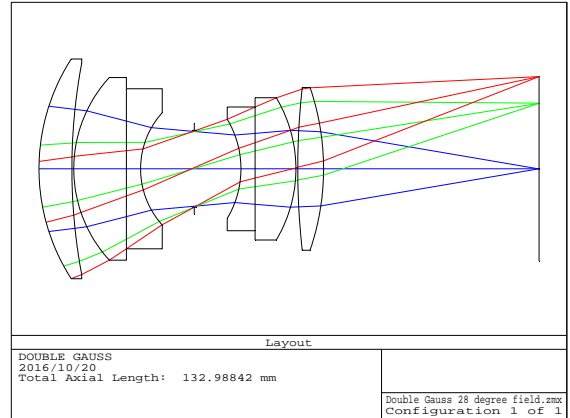




光學鏡片設計

ZEMAX is a program which can model, analyze, and assist in the design of optical systems. The interface to ZEMAX has been designed to be easy to use, and with a little practice it can allow very rapid interactive design.

雙高斯鏡頭



變焦鏡頭

